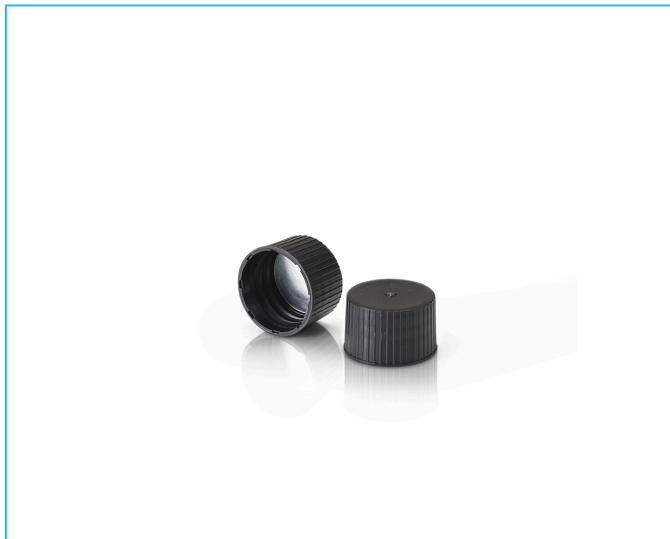


28/410 Black Induction Heat Seal Screw Cap For PET Bottles - Ribbed

ZHPIHS280B-PET



Specification	
Weight (tolerance)	4 (+/-0.3g)
Material	PP
Recycled Content	0%
Colour	White
Resin Identification Code	5 - PP
Neck Type	28/410
Case Quantity	1,800
Pallet Quantity	90,000
Pallet Height (mm)	2000
Pallet Type	Standard Pallet
Commodity Code	39235010
Region of Manufacture	UK
Seal Type	Induction Heat Seal PET
Wad Material	Heat Seal Foil
Lid Type	Wadded Screw Cap

Recommendations

- Closure application torque info is a recommendation only. Purchasers must satisfy themselves on the torque applied.*

Recycling

- Products made from HDPE, LDPE, PET, and PP are recyclable in standard facilities in the UK.



See Recommendations.	
Closure Application Torque (Nm)*	1.5
Issue Date	06/10/2023

Full drawings available on request.

IMPORTANT

It is the purchaser's responsibility to ensure compatibility of the product with the intended contents and also with any other products which together form a combination.

CONTACT US

01686 611360

sales@cambrianpackaging.co.uk

cambrianpackaging.co.uk

Follow us    

